

# ZIP HYDROBOIL FOR THE WORKPLACE

ZIP HYDROBOIL | PURE TASTING | INSTANT | **BOILING**



**INSTANT BOILING WATER** JUST BECAME MORE EFFICIENT.

# Hello.

WELCOME TO THE HOME OF THE WORLD'S MOST ADVANCED DRINKING WATER APPLIANCES.

Founded in Australia in 1947, we're known around the world for our innovation and expertise in filtered boiling, chilled and sparkling water taps – technology we've been perfecting for decades.

Our products can be found in homes and workplaces in over 70 countries around the world, delivering advanced water filtration that helps create the purest, safest and cleanest-tasting water possible.

What's more, our boiling water products are designed with energy efficiency in mind, not only saving time, but energy too.

## A HISTORY OF DRINKING WATER INNOVATION FOR 70 YEARS

1980

Zip launches Miniboil on-wall instant boiling water for homes and kitchens

1991

Zip opens in the United Kingdom

1984

Zip Miniboil wins Australian design award



1947

Zip founded in Australia as manufacturer of sink and bath heaters

1975

World's first small on-wall instant boiling water system installed

1993

Zip launches Hydroboil on-wall instant boiling water for work kitchens

**INTRODUCING ZIP HYDROBOIL & HYDROBOIL PLUS** 04-05

**TECHNOLOGY & WELLNESS** 06-07

**PRODUCT RANGE** 08

ZIP HYDROBOIL PLUS  
ZIP HYDROBOIL

**ACCESSORIES & INSTALLATION** 09

**1996**

Zip launches HydroTap under-bench instant boiling water

**2004**

Zip HydroTap redesigned wins Australian Design Mark

**2012**

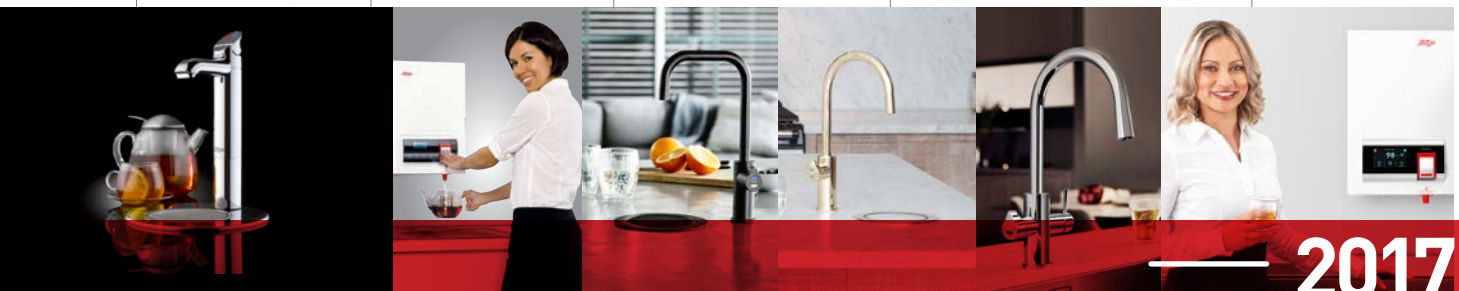
Zip introduces world's first boiling, chilled and sparkling water on tap

**2014**

Zip introduces G4, the fourth generation of HydroTap

**2017**

Zip receives Good Design Award Selection for new On-Wall boiling range with filter



**2007**

Zip introduces electronically controlled instant boiling water

**2015**

Zip introduces three new styles and wins Good Design Award

**2016**

Zip introduces eight new Platinum finishes

**2017**

Zip introduces Celsius All-In-One Arc and wins Good Design Award

# **A SMARTER SOLUTION FOR A PRODUCTIVE WORKPLACE**

It's not always easy balancing the needs of employees with cost-effectiveness. At Zip Water, our goal is to do just that. As inventors of the instant boiling water category, we understand the challenges of designing a safe, reliable boiling water solution that's as energy efficient as it is convenient. The quality and durability of our On-Wall instant boiling water range and their energy efficiency over time, will ensure great performance in the long run.



**HELP OFFSET  
RISING ENERGY COSTS**

Enhanced energy  
efficiency features.



**DISPENSES BOILING WATER  
RELIABLY, QUICKLY,  
AND SAFELY**

Safely boost  
productivity.



# EFFICIENT BY DESIGN. SMARTER BY NATURE.

It's great having instant boiling water at the touch of a button, but energy consumption is a big consideration, both from a cost and sustainability point of view. That's why we're constantly improving the design and operation of our instant boiling water products.

## ENERGY SAVING MODES



### READY WHEN YOU ARE, SLEEPS WHEN YOU DO

Our smart energy saving modes make it easier to track and manage energy consumption. The amount of energy used each day is shown, and resets at midnight, making it easy to keep track of high-demand days and times.

Smarter still, Zip Hydroboil Plus can be programmed to automatically save energy when not in use, or in low-demand periods. This makes it easy to customise to the needs of any working environment, while improving energy efficiency and reducing running costs.

## SELF-CALIBRATING TECHNOLOGY



### A SMARTER ELEMENT, EVEN AGAINST THE ELEMENTS

Zip Water's self-calibrating technology automatically finds the boiling point at any altitude, so whether you're using our products at sea level, or at high altitudes, the Zip Hydroboil Plus will maintain optimum performance, without over-boiling.

## POWER-PULSE™



### ACCURACY MEETS EFFICIENCY

Proprietary Power-Pulse technology delivers precise micro pulses of energy to the heating element. This helps keep the temperature exactly where it's needed.

Highly accurate digital temperature-monitoring sensors maintaining a variation of just 0.2°C from the set point, keeping the Zip Hydroboil Plus energy efficient.

## SAFER WATER



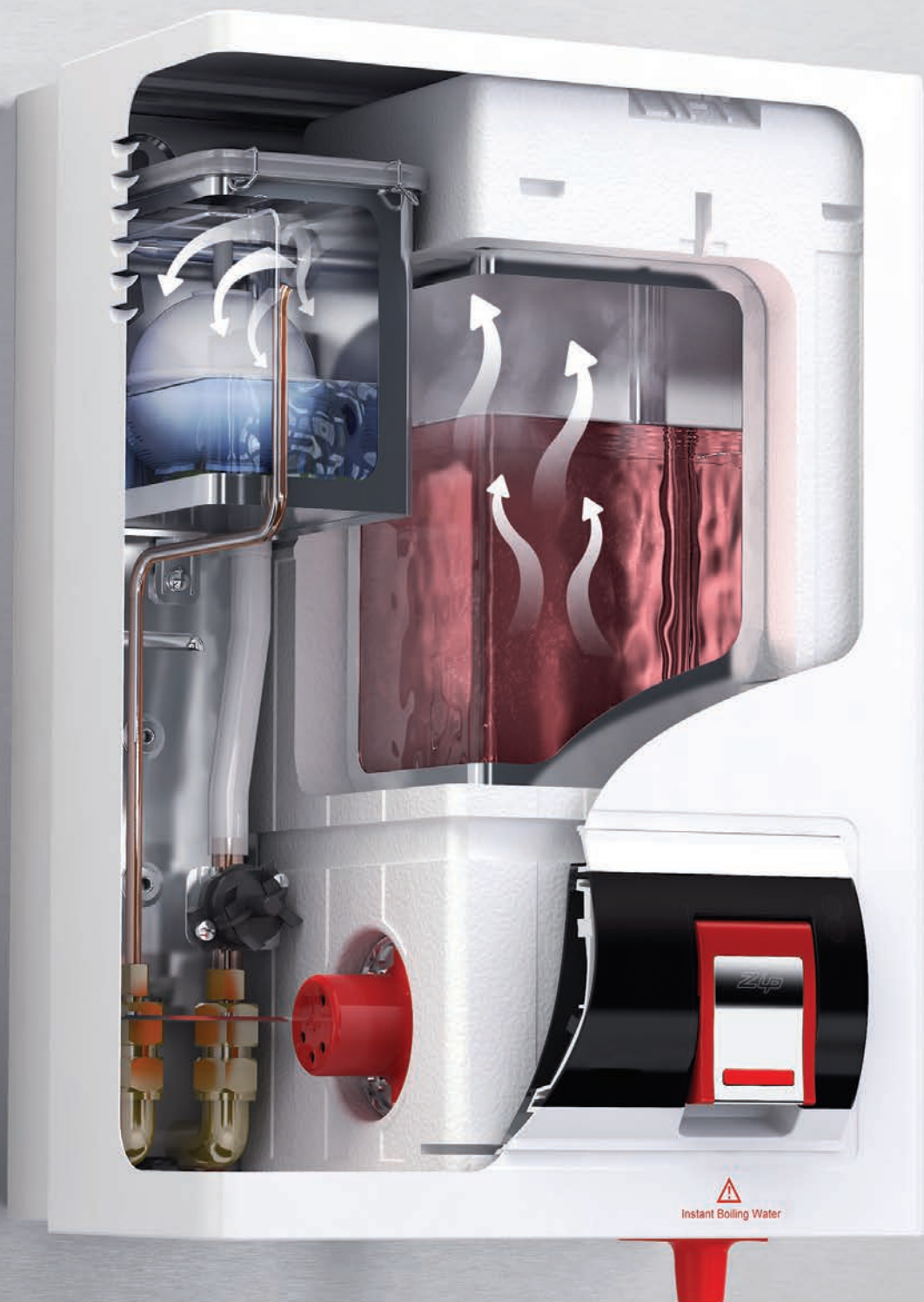
### SAFER WATER STARTS WITH THE MATERIALS

Our On-Wall instant boiling water range is manufactured in Australia, so you can be confident they pass the most stringent water safety tests.

A focus on the highest quality component materials ensures every drop of boiling water is of the highest quality, and perfect for human consumption. That's why we use NSF approved PPS; a high temperature thermoplastic polymer, and 444 grade stainless steel for our tank construction.

### SAFER WATER BY DESIGN

Zip Hydroboil Plus features a flush mounted cool-to-touch tap design with integrated safety lock, to prevent users from accidentally dispensing boiling water.



# ZIP HYDROBOIL PLUS



**NOMINAL CAPACITY**  
3.0 Litres  
**BOILING CUPS\***  
18 (at one time)  
**RECOVERY**  
100 cups per hour  
**CASE**  
White  
**POWER RATING**  
220V-240V  
**WARRANTY**  
1 year  
**DIMENSIONS HxWxD**  
431 x 289 x 180mm



**NOMINAL CAPACITY**  
5.0 Litres  
**BOILING CUPS\***  
30 (at one time)  
**RECOVERY**  
150 cups per hour  
**CASE**  
White  
**POWER RATING**  
220V-240V  
**WARRANTY**  
1 year  
**DIMENSIONS HxWxD**  
465 x 318 x 198mm



**NOMINAL CAPACITY**  
7.5 Litres  
**BOILING CUPS\***  
45 (at one time)  
**RECOVERY**  
150 cups per hour  
**CASE**  
White  
**POWER RATING**  
220V-240V  
**WARRANTY**  
1 year  
**DIMENSIONS HxWxD**  
578 x 318 x 198mm

# ZIP HYDROBOIL



**NOMINAL CAPACITY**  
3.0 Litres  
**BOILING CUPS\***  
18 (at one time)  
**RECOVERY**  
100 cups per hour  
**CASE**  
White  
**POWER RATING**  
220V-240V  
**WARRANTY**  
1 year  
**DIMENSIONS HxWxD**  
431 x 289 x 180mm



**NOMINAL CAPACITY**  
5.0 Litres  
**BOILING CUPS\***  
30 (at one time)  
**RECOVERY**  
150 cups per hour  
**CASE**  
White  
**POWER RATING**  
220V-240V  
**WARRANTY**  
1 year  
**DIMENSIONS HxWxD**  
465 x 318 x 198mm



**NOMINAL CAPACITY**  
7.5 Litres  
**BOILING CUPS\***  
45 (at one time)  
**RECOVERY**  
150 cups per hour  
**CASE**  
White  
**POWER RATING**  
220V-240V  
**WARRANTY**  
1 year  
**DIMENSIONS HxWxD**  
578 x 318 x 198mm



**NOMINAL CAPACITY**  
15.0 Litres  
**BOILING CUPS\***  
100 (at one time)  
**RECOVERY**  
150 cups per hour  
**CASE**  
White  
**POWER RATING**  
220V-240V  
**WARRANTY**  
1 year  
**DIMENSIONS HxWxD**  
600 x 390 x 299mm



**NOMINAL CAPACITY**  
25.0 Litres  
**BOILING CUPS\***  
150 (at one time)  
**RECOVERY**  
215 cups per hour  
**CASE**  
White  
**POWER RATING**  
220V-240V  
**WARRANTY**  
1 year  
**DIMENSIONS HxWxD**  
780 x 390 x 299mm



**NOMINAL CAPACITY**  
40.0 Litres  
**BOILING CUPS\***  
240 (at one time)  
**RECOVERY**  
350 cups per hour  
**CASE**  
White  
**POWER RATING**  
380V-415V  
**WARRANTY**  
1 year  
**DIMENSIONS HxWxD**  
840 x 515 x 284mm



# ACCESSORIES & CONSUMABLES

## Z-TAP™ REPLACEMENT LEVER

Helps protect users from accidentally burning themselves. The Z-Tap is always “locked” requiring a small lever to be lifted in order to operate the tap and dispense boiling water.

Suits any Hydroboil model.

**ORDER CODE** 93734



## Z-GUARD™

Additional protection for users to guard against the hot metallic surface of traditional style boiling water taps

Suits any Hydroboil model.

**ORDER CODE** 94514



## TUNDISH

All Zip wall mounted boiling water units have a vent which needs to terminate to a safe, visible location in accordance with plumbing standards. To help achieve a compliant installation Zip offers the following two Tundish options:



**Right angle (wall-mounted) ORDER CODE** 99017

**Straight (sink-mounted) ORDER CODE** 99018

## DRIP TRAY

Zip wall mounted boiling water units should be installed over a sink draining board. Where this is not possible Zip offers the following Drip Tray options:



**Portable (manually-drained) ORDER CODE** 99043

**Fixed (self-draining) ORDER CODE** 99056

# INSTALLATION



## FEATURED PRODUCT

Zip Hydroboil shown installed over a sink. For full installation instructions and technical drawings, refer to zipwater.com

## LOCATION

Should be installed over a sink draining board

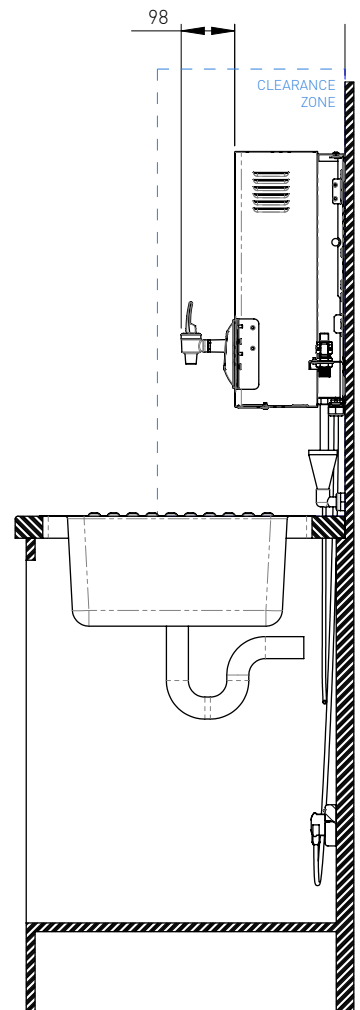
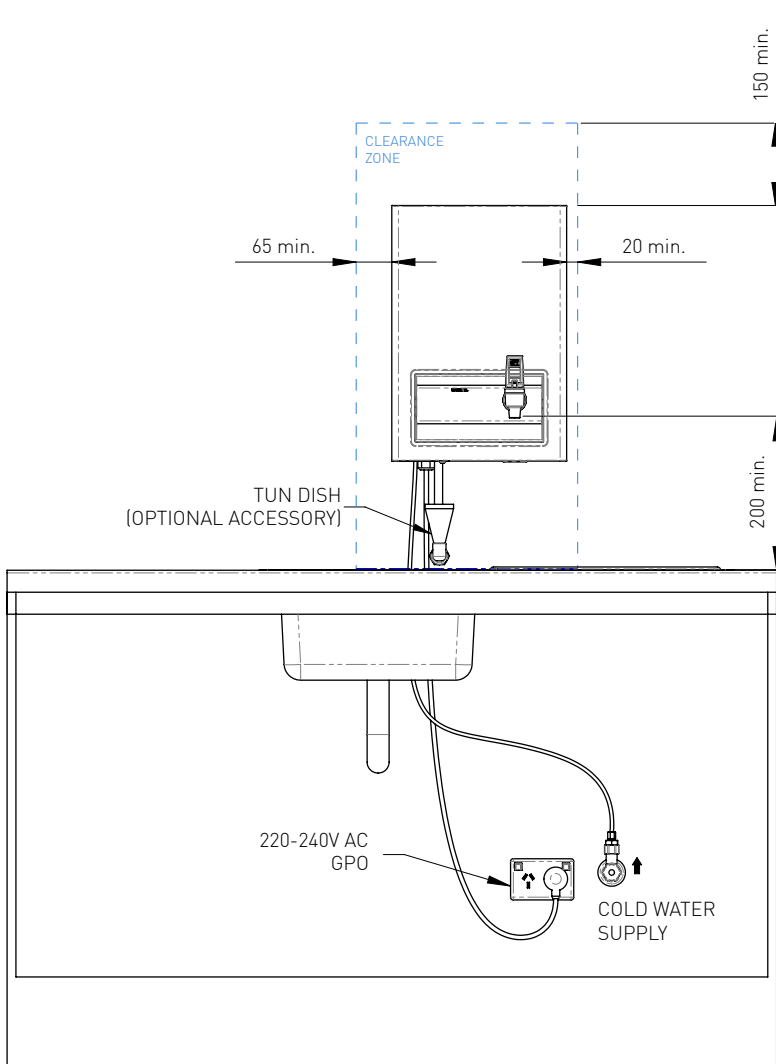
## ELECTRICAL

Models under 7.5 ltrs capacity can be plugged into a 220-240V 10 amp general power outlet, other capacities should be hard wired. All electrical installations should comply with relevant local and national standards.

## PLUMBING

Must be connected to a potable water supply with a minimum pressure of 70kPa (150kPa for Hydroboil) and a maximum of 500kPa. All plumbing installations must comply with relevant local and national standards.

# TECHNICAL INFORMATION





Products shown in this brochure are protected by international patents. Further patents are pending. Zip reserves the right to change product specifications without notice. Whilst every endeavour is made to ensure accuracy, no responsibility is taken for any errors or omissions in detail. The terms "Zip", "Hydroboil", "Autoboil", "Econoboil", "MicroPurity", "HydroCare" and "Z-Tap" are trademarks of Zip Heaters (Australia) Pty. Ltd.



**ZIP HYDROBOIL | PURE TASTING | INSTANT | BOILING**

---

INSTANT BOILING WATER JUST BECAME MORE EFFICIENT

AUSTRALIA 1800 638 633

EXPORT +(612) 9796 3100

**zipwater.com**